

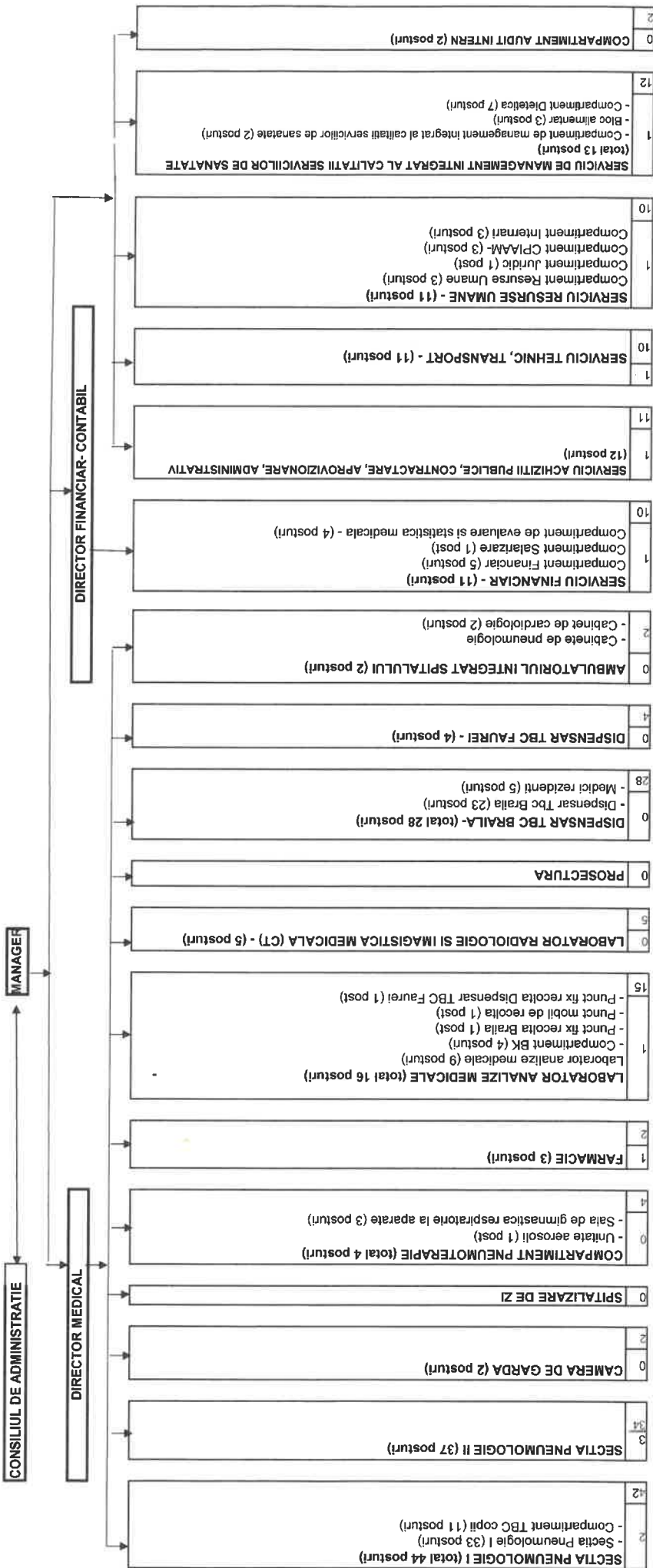
Anexa nr. 1
la HCY Braila
nr. 168 / 2024

CONSILIUL JUDETEAN BRAILA
SPITALUL DE PNEUMOTIZIOLOGIE
 Str. R.S. Campiniu Nr. 21, Braila, 810003.
 Tel: 0239 613 665; Fax: 0239 613 113
 www.spitalulitbcbr.ro
 spitallitbcbraila@yahoo.com

ANMCS
 unitate afiliată în
 PROCES DE ACREDITARE
 CICLUL al II-lea

ISO 9001
 ISO 22000
 ISO 14001

15 functii de conducere
 193 functii de executie
 208 posturi




MANAGER,
 EC. SIMPTEURU STEFAN

Anexa nr.2
la HCT Braila
nr. 168 / 2024

CONSILIUL JUDETEAN BRAILA
SPITALUL DE PNEUMOFIZIOLOGIE

ANMCS
unitate afiliată în
PROCES DE ACREDITARE
CICLUL al II-lea

Str. R.S. Campiniu Nr. 21, Braila, 810003,
Tel: 0239 613 665; Fax: 0239 613 113
www.spitaluibcbr.ro
spitaluibcbraila@yahoo.com



STAT DE FUNCTII LA DATA DE

09.07.2024

CONDUCERE

Nr Crt.	Denumirea functiei	Grad profesional	Studii	Grad	Post	Observatii
1	Manager		S		1.0	
2	Director financiar-contabil		S	II	1.0	
3	Director medical		S		1.0	

Total CONDUCERE

3.0

**SECTII MEDICALE
SPITAL**

SECTIA PNEUMOLOGIE I

Nr Crt.	Denumirea functiei	Grad profesional	Studii	Grad	Post	Observatii
4	Sef sectie		S		1.0	
5	Medic	Primar	S		1.0	
6	Medic	Primar	S		1.0	
7	Medic	Specialist	S		1.0	
8	Medic	Specialist	S		1.0	
9	Asistent sef	Principal	PL		1.0	
10	Asistent medical	Principal	PL		1.0	
11	Asistent medical	Principal	PL		1.0	

12	Asistent medical	Principal	PL	1.0	
13	Asistent medical	Principal	PL	1.0	
14	Asistent medical	Principal	PL	1.0	
15	Asistent medical	Principal	PL	1.0	
16	Asistent medical	Principal	PL	1.0	
17	Asistent medical	Principal	PL	1.0	SUSPENDAT TEMPORAR
18	Asistent medical	Principal	PL	1.0	
19	Asistent medical	Principal	PL	1.0	
20	Asistent medical	Principal	PL	1.0	
21	Asistent medical	Principal	PL	1.0	
22	Asistent medical	Principal	S	1.0	
23	Asistent medical	Principal	PL	1.0	SUSPENDAT TEMPORAR
24	Asistent medical	Principal	S	1.0	
25	Asistent medical		PL	1.0	
26	Infirmiera		G	1.0	
27	Infirmiera		G	1.0	
28	Infirmiera		G	1.0	
29	Infirmiera		G	1.0	
30	Infirmiera		G	1.0	
31	Infirmiera		G	1.0	
32	Infirmiera		G	1.0	
33	Ingrijitoare		G	1.0	
34	Ingrijitoare		G	1.0	VACANT
35	Ingrijitoare		G	1.0	
36	Psiholog	Practicant	S	1.0	

Total SECTIA PNEUMOLOGIE I **33.0**

COMPARTIMENT TBC COPII

37	Medic	Principal	S	1.0	MEDIC COORD.
38	Asistent medical	Principal	PL	1.0	ASISTENT COORD.
39	Asistent medical	Principal	PL	1.0	
40	Asistent medical	Principal	PL	1.0	
41	Asistent medical	Principal	PL	1.0	
42	Asistent medical	Principal	PL	1.0	
43	Infirmiera		G	1.0	
44	Infirmiera		G	1.0	
45	Infirmiera		G	1.0	
46	Infirmiera		G	1.0	
47	Infirmiera		G	1.0	

Total COMPARTIMENT TBC COPII 11.0

Total SECTIA PNEUMOLOGIE I 44.0

SECTIA PNEUMOLOGIE II

Nr Crt.	Denumirea functiei	Grad profesional	Studii	Grad	Post	Observatii
48	Sef sectie		S		1.0	
49	Medic	Specialist	S		1.0	MEDIC COORD. AMBULATORIU
50	Medic	Specialist	S		1.0	
51	Medic	Primar	S		1.0	
52	Medic	Primar	S		1.0	
53	Medic	Specialist	S		1.0	
54	Asistent sef pe unitate	Principal	PL	II	1.0	ASISTENT SEF UNITATE
55	Asistent sef	Principal	PL		1.0	
56	Asistent medical	Principal	S		1.0	
57	Asistent medical	Principal	S		1.0	
58	Asistent medical	Principal	PL		1.0	
59	Asistent medical	Principal	PL		1.0	
60	Asistent medical	Principal	PL		1.0	
61	Asistent medical	Principal	S		1.0	
62	Asistent medical	Principal	PL		1.0	
63	Asistent medical	Principal	PL		1.0	
64	Asistent medical	Principal	PL		1.0	
65	Asistent medical	Principal	PL		1.0	
66	Asistent medical	Principal	PL		1.0	
67	Asistent medical	Principal	PL		1.0	
68	Asistent medical	Principal	PL		1.0	
69	Asistent medical	Principal	PL		1.0	
70	Asistent medical	Principal	PL		1.0	
71	Asistent medical	Principal	PL		1.0	
72	Infirmiera		G		1.0	
73	Infirmiera		G		1.0	
74	Infirmiera		G		1.0	
75	Infirmiera		G		1.0	
76	Infirmiera		G		1.0	
77	Infirmiera		G		1.0	
78	Infirmiera		G		1.0	
79	Infirmiera		G		1.0	
80	Infirmiera		G		1.0	
81	Infirmiera		G		1.0	
82	Ingrijitoare		G		1.0	
83	Ingrijitoare		G		1.0	

84	Ingrjitore		G		1.0
----	------------	--	---	--	-----

Total SECTIA PNEUMOLOGIE II **37.0**

CAMERA DE GARDA

Nr Crt.	Denumirea functiei	Grad profesional	Studii	Grad	Post	Observatii
85	Asistent medical		PL		1.0	
86	Asistent medical	Principal	PL		1.0	

Total CAMERA DE GARDA **2.0**

COMPARTIMENT PNEUMOTERAPIE**UNITATE AEROSOLI**

87	Asistent medical		PL		1.0	VACANT
----	------------------	--	----	--	-----	--------

Total UNITATE AEROSOLI **1.0**

SALA DE GIMNASTICA RESPIRATORIE LA APARATE

88	Kinetoterapeut		S		1.0	VACANT
89	Asistent medical		PL		1.0	VACANT
90	Ingrijitoare				1.0	VACANT

Total SALA DE GIMNASTICA RESPIRATORIE LA APARATE **3.0**

Total COMPARTIMENT PNEUMOTERAPIE **4.0**

LABORATOR RADIOLOGIE SI IMAGISTICA MEDICALA (CT)

Nr Crt.	Denumirea functiei	Grad profesional	Studii	Grad	Post	Observatii
91	Medic	Primar	S		1.0	MEDIC COORD.
92	Asistent medical	Principal	S		1.0	ASISTENT COORD.
93	Asistent medical	Principal	PL		1.0	
94	Asistent medical	Principal	PL		1.0	
95	Asistent medical	Principal	PL		1.0	

Total LABORATOR RADIOLOGIE SI IMAGISTICA MEDICALA (CT) 5.0

FARMACIE

Nr Crt.	Denumirea functiei	Grad profesional	Studii	Grad	Post	Observatii
96	Farmacist sef	Specialist	S		1.0	
97	Asistent medical	Principal	PL		1.0	
98	Asistent medical		PL		1.0	VACANT

Total FARMACIE**3.0****LABORATOR ANALIZE MEDICALE**

Nr Crt.	Denumirea functiei	Grad profesional	Studii	Grad	Post	Observatii
99	Sef laborator		S		1.0	REZERVAT DIR. MEDICAL
100	Biolog	Specialist	S		1.0	
101	Biolog	Specialist	S		1.0	
102	Asistent medical	Principal	PL		1.0	
103	Asistent medical	Principal	PL		1.0	
104	Asistent medical	Principal	PL		1.0	
105	Registrator medical		M		1.0	
106	Registrator medical		M		1.0	VACANT
107	Ingrijitoare		G		1.0	

Total LABORATOR ANALIZE MEDICALE**9.0****COMPARTIMENT BK**

108	Biolog	Principal	S		1.0	BIOLOG COORD.
109	Asistent medical	Principal	PL		1.0	
110	Asistent medical		PL		1.0	
111	Ingrijitoare		G		1.0	

Total COMPARTIMENT BK**4.0****Punct fix recolta Braila**

112	Asistent medical		PL		1.0	VACANT
-----	------------------	--	----	--	-----	--------

Total Punct fix recolta Braila**1.0**

Punct mobil de recolta

113	Asistent medical	Debutant	PL	1.0	
-----	------------------	----------	----	-----	--

Total Punct mobil de recolta 1.0

Punct fix recolta dispensar TBC Faurei

114	Asistent medical		PL	1.0	VACANT
-----	------------------	--	----	-----	--------

Total Punct fix recolta dispensar TBC Faurei 1.0

Total LABORATOR ANALIZE MEDICALE 16.0

SERVICIUL DE MANAGEMENT INTEGRAT AL CALITATII SERVICIILOR DE SANATATE

Nr Crt.	Denumirea functiei	Grad profesional	Studii	Grad	Post	Observatii
115	Sef serviciu		S	II	1.0	

Total SEF SERVICIU 1.0

COMPARTIMENT DE MANAGEMENT INTEGRAT AL CALITATII SERVICIILOR DE SANATATE

Nr Crt.	Denumirea functiei	Grad profesional	Studii	Grad	Post	Observatii
116	Referent de specialitate	I	S		1.0	
117	Economist	IA	S		1.0	SUSPENDAT TEMPORAR

Total COMPARTIMENT DE MANAGEMENT INTEGRAT AL CALITATII SERVICIIL 2.0

BLOC ALIMENTAR

Nr Crt.	Denumirea functiei	Grad profesional	Studii	Grad	Post	Observatii
118	Muncitor calificat	I	G		1.0	
119	Muncitor calificat	III	G		1.0	
120	Ingrijitoare		G		1.0	

Total BLOC ALIMENTAR 3.0

COMPARTIMENT DIETETICA

Nr Crt.	Denumirea functiei	Grad profesional	Studii	Grad	Post	Observatii
121	Asistent medical	Principal	PL		1.0	ASISTENT COORD.
122	Infirmiera		G		1.0	
123	Infirmiera		G		1.0	
124	Infirmiera		G		1.0	
125	Infirmiera		G		1.0	
126	Infirmiera		G		1.0	VACANT

127	Infirmiera		G		1.0	VACANT
-----	------------	--	---	--	-----	--------

Total COMPARTIMENT DIETETICA 7.0

Total SERVICIUL DE MANAGEMENT INTEGRAT AL CALITATII SERVICIILOR DE 13.0

TOTAL SPITAL 127.0

DISPENSAR TBC

DISPENSAR TBC BRAILA

Nr Crt.	Denumirea functiei	Grad profesional	Studii	Grad	Post	Observatii
128	Asistent medical	Principal	PL		1.0	ASISTENT COORD.
129	Asistent medical	Principal	PL		1.0	
130	Asistent medical	Principal	PL		1.0	
131	Asistent medical	Principal	PL		1.0	
132	Asistent medical	Principal	PL		1.0	
133	Asistent medical	Principal	PL		1.0	
134	Asistent medical	Principal	PL		1.0	
135	Asistent medical	Principal	PL		1.0	
136	Asistent medical	Principal	PL		1.0	
137	Asistent medical	Principal	PL		1.0	
138	Asistent medical	Principal	PL		1.0	
139	Asistent medical	Principal	PL		1.0	
140	Asistent medical	Principal	PL		1.0	
141	Asistent medical	Principal	PL		1.0	
142	Asistent medical	Principal	PL		1.0	
143	Asistent medical	Principal	PL		1.0	
144	Asistent medical	Principal	S		1.0	
145	Asistent medical	Principal	PL		1.0	
146	Asistent medical	Principal	PL		1.0	
147	Statistician medical	Principal	M		1.0	
148	Registrator medical	Principal	M		1.0	
149	Ingrijitoare		G		1.0	
150	Ingrijitoare		G		1.0	

Total DISPENSAR TBC BRAILA **23.0**

MEDICI REZIDENTI

Nr Crt.	Denumirea functiei	Grad profesional	Studii	Grad	Post	Observatii
151	Medic rezident	Anul IV-V	S		1.0	
152	Medic rezident	Anul II	S		1.0	
153	Medic rezident	Anul III	S		1.0	
154	Medic rezident	Anul II	S		1.0	
155	Medic rezident	Anul I	S		1.0	VACANT

Total MEDICI REZIDENTI **5.0**

Total DISPENSAR TBC BRAILA **28.0**

DISPENSAR TBC FAUREI

Nr Crt.	Denumirea functiei	Grad profesional	Studii	Grad	Post	Observatii
156	Asistent medical	Principal	PL		1.0	
157	Asistent medical	Principal	PL		1.0	
158	Registrator medical	Principal	M		1.0	
159	Ingrijitoare		G		1.0	

Total DISPENSAR TBC FAUREI **4.0**

TOTAL DISPENSAR TBC **32.0**

AMBULATORIUL INTEGRAT AL SPITALULUI

CABINET DE CARDIOLOGIE

Nr Crt.	Denumirea functiei	Grad profesional	Studii	Grad	Post	Observatii
160	Medic	Specialist	S		1.0	
161	Asistent medical		PL		1.0	

Total CABINET DE CARDIOLOGIE **2.0**

TOTAL AMBULATORIUL INTEGRAT AL SPITALULUI **2.0**

TOTAL SECTII MEDICALE

161.0

APARAT FUNCTIONAL**SERVICIU FINANCIAR**

Nr Crt.	Denumirea functiei	Grad profesional	Studii	Grad	Post	Observatii
162	Sef serviciu		S	II	1.0	

Total SEF SERVICIU

1.0

COMPARTIMENT FINANCIAR

Nr Crt.	Denumirea functiei	Grad profesional	Studii	Grad	Post	Observatii
163	Economist	IA	S		1.0	SUSPENDAT TEMPORAR
164	Economist	IA	S		1.0	
165	Economist	IA	S		1.0	
166	Economist	IA	S		1.0	
167	Registrator medical		M		1.0	

Total COMPARTIMENT FINANCIAR

5.0

COMPARTIMENT SALARIZARE

Nr Crt.	Denumirea functiei	Grad profesional	Studii	Grad	Post	Observatii
168	Referent de specialitate		S		1.0	VACANT

Total COMPARTIMENT SALARIZARE

1.0

COMPARTIMENT DE EVALUARE SI STATISTICA MEDICALA

Nr Crt.	Denumirea functiei	Grad profesional	Studii	Grad	Post	Observatii
169	Asistent medical	Principal	PL		1.0	ASISTENT COORD.
170	Analist	IA	S		1.0	

171	Economist	IA	S	1.0
172	Asistent medical	Principal	PL	1.0

Total COMPARTIMENT DE EVALUARE SI STATISTICA MEDICALA 4.0

Total SERVICIU FINANCIAR 11.0

SERVICIU ACHIZITII PUBLICE, CONTRACTARE, APROVIZIONARE, ADMINISTRATIV

Nr Crt.	Denumirea functiei	Grad profesional	Studii	Grad	Post	Observatii
173	Sef serviciu		S	II	1.0	
174	Economist	IA	S		1.0	
175	Operator date	II	M		1.0	
176	Muncitor calificat	IV	G		1.0	
177	Muncitor calificat	I	G		1.0	
178	Spalatoareasa		G		1.0	
179	Spalatoareasa		G		1.0	
180	Spalatoareasa		G		1.0	
181	Spalatoareasa		G		1.0	
182	Muncitor calificat	IV	G		1.0	
183	Economist		S		1.0	VACANT
184	Ingrijitoare		S		1.0	

Total SERVICIU ACHIZITII PUBLICE, CONTRACTARE, APROVIZIONARE, ADMINISTRAT 12.0

SERVICIU TEHNIC, TRANSPORT

Nr Crt.	Denumirea functiei	Grad profesional	Studii	Grad	Post	Observatii
185	Sef serviciu		S	II	1.0	
186	Muncitor calificat	IV	G		1.0	
187	Muncitor calificat	I	G		1.0	
188	Muncitor calificat	I	G		1.0	
189	Muncitor calificat	IV	G		1.0	
190	Muncitor calificat	IV	G		1.0	
191	Muncitor calificat		G		1.0	VACANT
192	Muncitor calificat	IV	G		1.0	
193	Muncitor calificat	IV	M		1.0	
194	Muncitor calificat	IV	M		1.0	
195	Muncitor calificat	IV	M		1.0	

Total SERVICIU TEHNIC, TRANSPORT 11.0

SERVICIU RESURSE UMANE

Nr Crt.	Denumirea functiei	Grad profesional	Studii	Grad	Post	Observatii
196	SEf serviciu		S	II	1.0	VACANT

Total SEF SERVICIU**1.0****COMPARTIMENT RESURSE UMANE**

Nr Crt.	Denumirea functiei	Grad profesional	Studii	Grad	Post	Observatii
197	Referent de specialitate	I	S		1.0	SEF SERVICIU INTERIMAR
198	Referent		M		1.0	VACANT
199	Referent		M		1.0	VACANT

Total COMPARTIMENT RESURSE UMANE**3.0****COMPARTIMENT JURIDIC**

Nr Crt.	Denumirea functiei	Grad profesional	Studii	Grad	Post	Observatii
200	Consilier Juridic	IA	S		1.0	

Total COMPARTIMENT JURIDIC**1.0****COMPARTIMENT CPIAAM**

Nr Crt.	Denumirea functiei	Grad profesional	Studii	Grad	Post	Observatii
201	Medic	Specialist	S		1.0	
202	Asistent medical		PL		1.0	
203	Asistent medical		PL		1.0	VACANT

Total COMPARTIMENT CPIAAM **3.0**

COMPARTIMENT INTERNARI

Nr Crt.	Denumirea functiei	Grad profesional	Studii	Grad	Post	Observatii
204	Registrator medical		M		1.0	
205	Registrator medical		M		1.0	
206	Registrator medical		M		1.0	

Total COMPARTIMENT INTERNARI **3.0**

Total SERVICIU RESURSE UMANE **11.0**

COMPARTIMENT AUDIT INTERN

Nr Crt.	Denumirea functiei	Grad profesional	Studii	Grad	Post	Observatii
207	Auditor		S		1.0	VACANT
208	Auditor		S		1.0	VACANT

Total COMPARTIMENT AUDIT INTERN **2.0**

TOTAL SERVICII AUXILIARE **47.0**

TOTAL GENERAL **208**

Manager,

Ec. Sinpetru Stefan



Intocmit,
Comp. Personal
Ref. de sp. Maininche Diana